

A photograph of two women in a professional setting. One woman, with blonde hair and wearing a grey blazer, is seated and looking down at a device. The other woman, with dark hair and wearing a dark blazer, is leaning over her, also looking at the device. The background is slightly blurred, showing a white chair and some office equipment. The overall tone is professional and collaborative.

UCEM

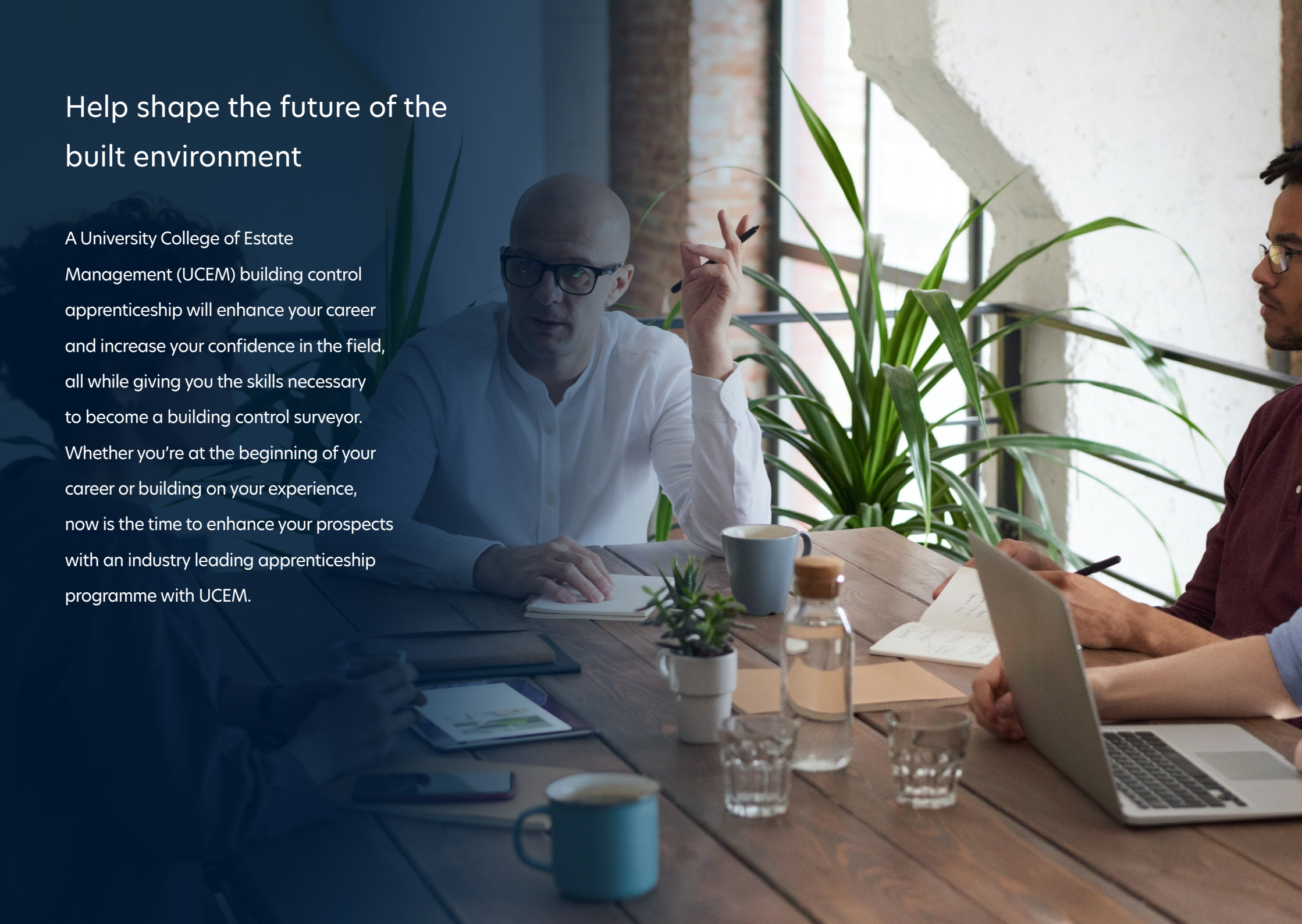
2023/24

BUILT FOR LIFE

Building Control Surveyor Degree
Apprenticeship

Help shape the future of the built environment

A University College of Estate Management (UCEM) building control apprenticeship will enhance your career and increase your confidence in the field, all while giving you the skills necessary to become a building control surveyor. Whether you're at the beginning of your career or building on your experience, now is the time to enhance your prospects with an industry leading apprenticeship programme with UCEM.



Welcome

UCEM is the leading provider of chartered surveying apprenticeships in England. The degree content is taught online, enabling you to study at a time and place that suits you.

Thank you for considering studying for an apprenticeship with UCEM. We are dedicated to ensuring your success and providing the best possible learning experience for all our students.

Since 1919, when we were founded as the College of Estate Management, we have supported around 150,000 students worldwide.

With over 100 years' experience of providing specialist and innovative training globally, we are here to support you through your studies and ensure you join the path to a rewarding career. We are steadfast in our aspiration to be the centre of excellence for built environment education.



Ashley Wheaton
UCEM Principal

5 reasons to choose UCEM apprenticeships

01 Built for online

We have been teaching online since 2001 so we are experts in online education.

03 All our programmes are recognised and accredited by at least one professional body, including:



02

Designed for busy working professionals, our apprenticeship programmes can be studied wherever you are; whether on a train, at home or in the office.



04 As an apprentice you can earn while you learn. With your employer paying for your fees, there has never been a better time to start a career in the built environment.

05 UCEM is rated 'Good' by the Office for Standards in Education, Children's Services and Skills (Ofsted) and 'Outstanding' in the area of behaviour and attitudes.



Say hello to your new community

Find out about what your fellow apprentices think about studying with UCEM.



“ One thing I love about learning with UCEM is the flexibility. You are given the responsibility to plan your learning at a pace which suits you.

Sadaqat Hussain
Cushman & Wakefield

“ I have been impressed with the support available, the standard of programme material continues to be high, the tutors are extremely knowledgeable and the variety of people who are undertaking the programme enable discussion.

Ben Smith
Cornwall Council



“ The best thing about being an apprentice is earning a real income while gaining real experience in your profession and earning a degree!

Aaran Pearson
Faithful+Gould



“ I love how the theory I learn with UCEM comes to life at my workplace since many of the jobs I assist with directly link with the topics I'm studying.

Tiffany Wrotten
Workman LLP

“ Completing university online has many benefits. The biggest benefit by far is that I can access it anywhere at any time, as long as I am connected to Wi-Fi! This gives me the freedom to tune into lectures on my commute to work and complete any readings when I have a few minutes spare.

Louise Lawrence
Savills



Join our ever-growing community

What is building control?



Are you interested in building technology, building standards, fire safety, inclusive environments and energy conservation? Then a career in building control is for you.

Building control surveyors can work on a wide variety of paths.

You may find yourself:

- working to ensure that building designs meet the required standards and that these standards are adhered to during the course of construction
- advising on specific aspects of building regulations, such as energy conservation, fire safety management strategies and accessibility
- issuing safety certificates; liaising with police, fire and ambulance services
- working in relation to safety of sports grounds
- advising on specific aspects of the building regulations, such as advice on energy conservation, fire safety management strategies or accessibility

Possible job titles you may hold:

- building control surveyor
- local authority building control surveyor
- building inspector
- SHEQ (safety, health, environment and quality) roles

This apprenticeship is designed to align your skills to the educational requirements of the industry's professional bodies and allows entry to:

- CIOB Chartered membership
- CABE Chartered membership
- RICS Chartered membership

“

Building control surveyors have a responsibility to maintain standards in the built environment;

specifically regulations that keep people safe from harm, for example fire and falling objects, and allow everyone to access buildings and spaces regardless of ability. As such, oversight of other professionals in the construction industry is part of the job, which means detailed knowledge of current building legislation is required, along with the ability to communicate these needs to many different parties – planners, surveyors, local authorities, conservation groups. A UCEM apprenticeship will equip potential building control surveyors with the specific skills needed to build a successful career in this field, in an accessible and flexible manner.”

Jonathan Hubert

Programme Leader, BSc (Hons) Building Control

Building Control Surveyor Degree Apprenticeship



Programme Leader

Jonathan Hubert

 [J.hubert@ucem.ac.uk](mailto:j.hubert@ucem.ac.uk)

Jon is the archetypal career-changer, having worked in the private sector for over 25 years prior to reading for a degree. Presently learning and teaching as a programme leader in the Construction faculty, Jon is a graduate in Architectural Technology from the University of West London (UWL) and has started a PhD programme at the University of Portsmouth on the evaluation of building performance. The topic is based around predicting building performance in a changing climate, using dynamic simulation modelling to create and test environmental scenarios in a virtual environment.

Award

BSc (Hons) Building Control
Apprenticeship completion certificate

Typical duration

54 months

Dates

Please refer to webpages for application and start dates.

Time commitment

An apprenticeship is linked with a full-time job. Employers are required to release an apprentice to undertake off-the-job training for at least 20% of their normal working hours. Typically, this is an average of one day per week.

The degree element of the apprenticeship requires 15-20 hours of study a week for 42 weeks per annum – this means that in addition to the release time that your employer gives, you will need to study for several hours per week in your own time.

Yr	Smtr	Autumn entry	Spring entry
1	smtr 1	Law for the Built Environment People and Organisational Management	Digital Technologies Construction Technology 1
	smtr 2	Digital Technologies Construction Technology 1	Law for the Built Environment People and Organisational Management
2	smtr 1	Introduction to Regulatory Frameworks Property Law	Construction Technology 2 Economics for the Built Environment
	smtr 2	Construction Technology 2 Economics for the Built Environment	Introduction to Regulatory Frameworks Property Law
3	smtr 1	Planning and Conservation Building Control	Construction Technology 3 Design and Environmental Science
	smtr 2	Construction Technology 3 Design and Environmental Science	Planning and Conservation Building Control
4	smtr 1	Building Pathology Fire Safety Case Study Project	Integrated Design Project Public Safety in Buildings Case Study Project
	smtr 2	Integrated Design Project Public Safety in Buildings Case Study Project	Fire Safety Building Pathology Case Study Project
5	smtr 1	Building Control End Point Assessment	Building Control End Point Assessment

The End Point Assessment will be comprised of two assessment methods.

[Further information on the EPA can be found in the Assessment Plan >](#)

Entry requirements

Entrants are normally required to have attained one of the following:

- 96 UCAS tariff points (or an equivalent level of attainment through recognised qualifications not included in the UCAS tariff) **or**:
 - Completed an Advanced Apprenticeship in Surveying or an Advanced Apprenticeship in Construction Technical through which a Construction and Built Environment Diploma with a minimum DD profile was obtained or through which a Construction and Built Environment Extended Diploma with a minimum MMM profile was obtained, or an equivalent qualification; **or**:
 - A current Royal Institution of Chartered Surveyors (RICS) Associate qualification (AssocRICS) and be in relevant employment **or**:
- Successfully completed the UCEM BSc Access module **and**
- GCSE - Grade 4 (or C) or above in English and mathematics (If you do not have these English and maths qualifications, you will need to complete an assessment that shows you are working at Level 1 or above. You will then need to complete functional skills qualifications as part of your apprenticeship.)

Please note that students are required to be 18 years or over at the start of their programme.

Dates for your diary

**Initial meeting
with apprenticeship outcomes officer**

week 4-6

First assignment due

week 10-11*

Second assignment due

week 18-20*

Progress reviews

week 12 onwards

*these dates are indicative and may change subject to the modules you are studying. Full schedules are published on UCEM's virtual learning environment (VLE).

Building control apprenticeship workshops will begin 6 months into the apprenticeship, during semester break periods.

Your time as an apprentice



How your time will be spent

This apprenticeship is a three-way partnership between the employer, the apprentice and UCEM. The aim is to provide you with the knowledge, skills and behaviours to become a successful building control surveyor.

You will spend 80% of your time working "on the job" and putting what you are learning into practice. You will do this by:

- interacting with clients
- learning from your peers
- understanding industry processes
- interacting professionally

Your employer will provide you with a workplace mentor to help you along the way.

The remaining 20% of your time will be studying "off the job" towards your apprenticeship.

Most of your learning will take place via UCEM's Virtual Learning Environment (VLE) with apprenticeship workshops

provided to engage with subjects supporting you through the end point assessment.

Participation

Activities you can be expected to participate in with UCEM:

- webinars
- online discussion forums
- videos
- interactive case studies
- reading textbooks and study papers
- coursework

At least every twelve weeks, you will have a review session with your line manager and apprenticeship outcomes officer. These sessions designed to support you and highlight any areas that require additional support.



“ I have felt very supported throughout my degree and apprenticeship. Attending quarterly meetings with both my workplace mentor and my UCEM co-ordinator allows me to raise any concerns I may have and reflect on my studies and career. My apprentice co-ordinator with UCEM is always on hand to answer any questions I have and provide guidance when needed.

On the VLE, there are forums each week to ask questions about the weekly learning material and exam/assignment. Student central services are also there to answer non-module specific questions and they are very efficient in responding.”



Louise Slimm

Faithful+Gould
Chartered Surveyor apprenticeship

“ I consider one of our greatest achievements as business owners has been the development of our apprentices; not just in their professional development but in their growth as a person.”



Martin Munday

Director, Modus Ltd

Studying online



When you study at UCEM, you'll be using our state-of-the-art Virtual Learning Environment (VLE), a specialised resource which provides you with everything you need to keep on top of your studies and succeed.

Virtual Learning Environment (VLE)

- You'll be guided through your learning with weekly study schedules and course guides. Studying online doesn't mean studying alone, as you'll also be fully supported by tutors and fellow students throughout your studies.
- The VLE is at the heart of your studies. Here you will find all the learning resources you need for your studies, you can participate in discussion with your tutor and other students, attend timetabled webinars or watch recordings.
- You'll also have access to our fantastic e-Library, which hosts a vast collection of e-books, journals, articles and other online resources, enabling you to access a wealth of subject-specific and credible information to support you throughout your studies

Support



Apprentices can be confident in UCEM's online teaching expertise, which we've been perfecting since 2001. We've outlined just some of the features of our online education model below, so that you can be confident that studying with UCEM is the best choice for you.

Apprenticeship outcomes officers (AOO)

Your first point of contact as an apprentice. The AOO role is all-encompassing and includes providing you with regular progress reviews to support with academic and personal development goals as well as ensuring you are supported pastorally.

Disability and Welfare

UCEM has a dedicated disability and wellbeing team who work to provide all students with the support and tools they need to succeed. Support is available to students with a range of disabilities, health conditions, and learning difficulties.



disabilitysupport@ucem.ac.uk



0800 019 9697



Module tutors

Your module leader is assisted by a team of module tutors who provide additional support via the weekly discussion forums and through webinars.



Academic support tutors

This team will help you navigate the world of online learning. Whether you need help using the VLE, the e-Library, understanding how to submit assignments, or managing your workload, these tutors are here to help you in a variety of ways throughout your studies.



What do I need to do to apply for an apprenticeship?

If you are currently employed within the built environment in England, then you will need your employer's support as they will fund your apprenticeship. Speak to your employer about the possibility of undertaking an apprenticeship. If they have questions, then our business development team will be happy to answer them.



Businessdevelopment@ucem.ac.uk

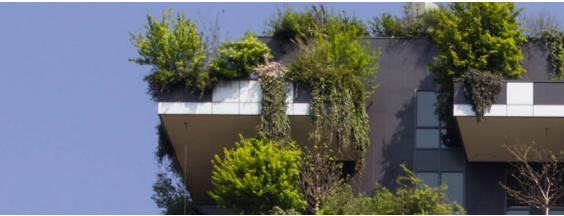


0118 467 2316

Not currently employed?

If you are looking to do an apprenticeship but are not currently employed, then you will need to search for an apprenticeship before applying with UCEM. You can do this by searching on the government website **www.findapprenticeship.service.gov.uk**, or by reaching out to relevant employers to see if they have any vacancies.

Sustainability



Our sustainability commitment

"UCEM fully accepts its responsibilities to the natural environment and the global society. We are committed to driving forward the sustainability agenda and will play a positive and transformative role that will contribute to securing an economically, politically, environmentally and socially sustainable future."

Sustainability is as much about our future as what we do today. The built environment encourages sustainable thinking and UCEM is leading the way in educating the sector's future leaders.

Teaching sustainability

Realising UCEM's sustainability potential goes beyond addressing day-to-day operations, to recognising our position to influence and educate industry professionals who design, develop and manage the built environment. Delivering academic excellence is one of UCEM's primary goals.

Recognition

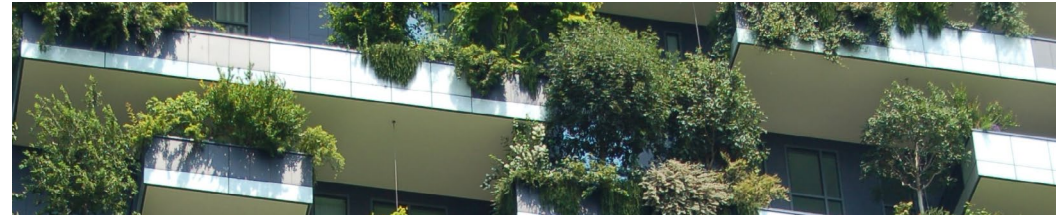
UCEM is proud to have been the first alternative provider to be awarded the Responsible Futures accreditation by the NUS (National Union of Students). This highlights UCEM's commitment to promoting sustainability and social responsibility. UCEM was also recognised with a 'Highly Commended' accolade at the Green Gown Awards.

UN sustainability goals

The United Nations' Sustainable Development Goals (SDGs) outline 17 interconnected objectives in order to achieve a better and more sustainable future for all. These goals address the challenges we face as a planet, including poverty, inequality, climate change, environmental degradation, peace and justice.

The UN sets out to achieve these wide-reaching goals by 2030, and UCEM is working institutionally to achieve these goals where possible, as well as striving to incorporate them into our curriculum. We are currently in the process of mapping our curriculum to these goals, so check our website in the future for more information.

The UN's sustainability goals



SUSTAINABLE DEVELOPMENT GOALS

Our programmes at a glance

Our programmes allow our students to meet the academic requirements to progress to professional membership and gain chartered status. Please see our website for specific accreditation details for each degree.

Our undergraduate programmes:

- BSc Access Module
- Undergraduate Single Module Study
- Certificate of Higher Education Built Environment Studies
- BSc (Hons) Building Control
- BSc (Hons) Building Surveying
- BSc (Hons) Construction Management
- BSc (Hons) Quantity Surveying
- BSc (Hons) Real Estate Management

Our apprenticeship programmes:

- Chartered Surveyor Degree Apprenticeship
- Building Control Degree Apprenticeship
- Construction Site Management Degree Apprenticeship

Our postgraduate programmes:

- Postgraduate Access Programme
- Postgraduate Single Module Study Programme
- MSc Building Surveying
- MSc Construction Management
- MSc Innovations in Sustainable Built Environments
- MSc Quantity Surveying
- MSc Real Estate

Our specialist programmes:

- MBA Construction and Real Estate