

# UCEM

postgraduate 21/22

# BUILT FOR LIFE

## MSc Construction Management



RICS



CIOB



cabe

# Help shape the future of the built environment

Construction management is the essential link between the expression of a client's wish for a built asset and its construction and eventual operation.

Construction managers are globally recognised professionals who are involved in a wide spectrum of built environment projects, ranging from simple residential buildings to complex commercial, industrial or infrastructure projects.

UCEM's accredited postgraduate programmes are designed for those who have expertise in property or construction and are looking to reach the next level of their career, as well as those entering the built environment.

## It's time to go online

During these unprecedented times, UCEM's vision to become 'The centre of excellence for built environment education' has never been more important. We will continue to provide an excellent online learning experience, as we've been doing since 2001, and the support you need to succeed.

# Welcome

UCEM is the leading provider of supported online learning for the built environment

Thank you for considering studying with UCEM. We are dedicated to ensuring your success and providing the best possible learning experience for all our students.

Since 1919, when we were founded as the College of Estate Management, we have supported around 150,000 students worldwide.

With over 100 years' experience of providing specialist and innovative training globally, we are here to support you through your studies and ensure you join the path to a rewarding career.

We are steadfast in our aspiration to be The Centre of Excellence for Built Environment Education.



**Ashley Wheaton**  
UCEM Principal



**UCEM Patron**  
His Royal Highness, The Prince of Wales

# 5 reasons to choose UCEM

## 01 It's time to study online

With the current situation causing disruption and uncertainty, choose certainty and uninterrupted studies with a pioneer in online education which has been wholly online since 2015.

## 02

Our programmes are recognised and accredited by professional bodies including:



## 03



You'll be joining our vibrant international community spanning

**100+** countries



## 04

UCEM programmes offer a range of modules that allow you to choose a specialism to support your career path

## 05

Designed for busy working professionals, we offer the flexibility to study at your own pace at a speed suitable for you, while our programmes can be studied wherever you are in the world!



# Employability

## Where could your UCEM degree take you?

As a UCEM graduate with an accredited degree, you'll join the ranks of a highly employable workforce within the built environment. From there, your career prospects are as exciting as they are diverse.



### Earnings



- Starting salary  
**£25,000 - £35,000**
- Experienced salary  
**£35,000 - £50,000**
- Senior salary  
**£60,000 +**

**98%**



UCEM graduates are working in the property and construction industries 15 months after graduation



**Median salary of UCEM graduates after 15 months**



of our students pass their APC and become MRICS within six months of graduating

From the moment you begin your degree and up to three years after you graduate, our dedicated careers team is here to help you progress your career.

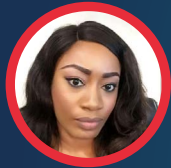
Here for you now

Here for you tomorrow

[careers@ucem.ac.uk](mailto:careers@ucem.ac.uk)

# Say hello, sannu, كيك ل ع م ال س ل ا, 哈囉 to your new community

Joining UCEM means being part of a vibrant international community of students from more than 100 countries and six continents.



“ Distance learning is a great way to **build network connections** in your major and to build your **communication and interpersonal skills** with other classmates.

Ajumoke Orike

**MBA Real Estate and Construction**



“ The VLE provided me with the flexibility to strike a balance between work and study. It also provided an excellent platform for me to **communicate and discuss coursework on international case studies with my classmates all over the world.**

Chan Sui Kai  
**MSc Real Estate**



## Join our ever-growing community

Antigua and Barbuda, Australia, Azerbaijan, Bahamas, Bahrain, Bangladesh, Barbados, Belgium, Bermuda, Botswana, British Virgin Islands, Cambodia, Canada, Cayman Islands, China, Cyprus, Czech Republic, Egypt, England, Eswatini,

Ethiopia, France, The Gambia, Germany, Ghana, Gibraltar, Greece, Grenada, Guernsey, Guyana, Hong Kong, India, Indonesia, Ireland, Isle of Man, Israel, Jamaica, Jersey, Kenya, Republic of Korea, Kuwait, Lebanon, Lithuania, Luxembourg, Macao,

Malawi, Malaysia, Maldives, Mauritius, Mongolia, Monserrat, Morocco, Mozambique, Namibia, Netherlands, New Zealand, Nigeria, Northern Ireland, Norway, Oman, Pakistan, Philippines, Poland, Qatar, Réunion, Russia, Saudi Arabia, Scotland,

Seychelles, Sierra Leone, Singapore, South Africa, Spain, Sri Lanka, St Lucia, St Kitts and Nevis, St Vincent and the Grenadines, Sudan, Tanzania, Trinidad and Tobago, Uganda, Ukraine, United Arab Emirates, United States, Vietnam, Wales, Zambia, Zimbabwe

# MSc Construction Management

Step into the world of construction management with this online postgraduate conversion programme. UCEM's industry-recognised programme provides a rigorous understanding of the principles, practices and ethics involved in construction management in a worldwide context, while preparing you for a career as a construction professional.

## Award

MSc Construction Management

## Duration

2 years

## Dates

	Apply by	Start date
Autumn	<b>2 Aug 2021</b>	27 Sept 2021
Spring	<b>31 Jan 2022</b>	28 Mar 2022

## Fees

£1,175 per module for students commencing in the 2021/22 academic year x 8 modules.

**Total programme fee: £9,400**

## Time commitment

15-20 hours a week for 42 weeks per annum.

Each 20-credit module equates to a total of 200 study hours broken down between directed online learning, self-directed learning and assessment. The breakdown between these three types of activity may vary between modules but on average is as follows:


Directed study time: 60hrs	(30%)
Self-directed study time: 70hrs	(35%)
Assessment study time: 70hrs	(35%)



## Programme Leader

Christine Gausden

 [C.gausden@ucem.ac.uk](mailto:C.gausden@ucem.ac.uk)

 +44 (0)118 467 2432

General enquiries: [enquiries@ucem.ac.uk](mailto:enquiries@ucem.ac.uk)

Yr	Smtr	Autumn (UK) entry	Spring (UK) entry
1	smtr 1	Sustainable and Innovative Construction Contract Administration and Practice	Sustainable and Innovative Construction Procurement and Tendering
	smtr 2	Law for Surveyors Procurement and Tendering	Law for Surveyors Contract Administration and Practice
2	smtr 1	Electives (Choose 1)	Maintenance Management Management of Construction
		Leading and Managing People or International Construction	
	smtr 2	Management of Construction	Postgraduate Project
		Postgraduate Project	
smtr 1	Maintenance Management	Electives (Choose 1)	
	Postgraduate Project (continued)	Leading and Managing People or International Construction	
			Postgraduate Project (continued)



“ I chose to study at UCEM because of its esteemed reputation in the industry. UCEM’s degrees are recognised by HKIS and RICS which means I am qualified to become chartered.

All the module leaders and tutors were very willing to help and I never felt alone during my studies. The VLE platform is very user-friendly so it makes studying more efficient which is very important for those who have little time to study each day after work.

**Billy Diec**

(Assistant Quantity Surveyor,  
Arcadis Hong Kong Limited)

## Study online



Studying online doesn't mean studying alone. You'll study alongside our vibrant and growing student community and have access to our experienced tutors and a network of discussion forums to enrich your studies.

### State-of-the-art learning

- Induction resources to prepare you for your online learning experience
- Online assignment submission, feedback and results
- A network of discussion forums shared by fellow students and tutors
- Comprehensive study resources to guide your academic journey


### Flexible learning

- Earn while you learn. Our programmes will fit around your work and personal commitments
- Conveniently catch up on scheduled learning materials you may have missed
- Access to your learning materials to study wherever you are with an internet connection


### Virtual Learning Environment (VLE)

- Rich resources and tools to support your education and build your knowledge and skills
- Learn through online seminars, briefings, tutorials and drop-in sessions
- You'll also have access to our fantastic e-Library, which hosts a vast collection of e-books, journals, articles and other online resources, enabling you to access a wealth of subject-specific and credible information to support you throughout your studies

### Need more information?

 [enquiries@ucem.ac.uk](mailto:enquiries@ucem.ac.uk)

 **LiveChat: ucem.ac.uk**

 **0800 019 9697**

## Support



Students can be confident in UCEM's online teaching expertise, which we've been perfecting since 2001. We've outlined just some of the features of our online education model below, so that you can be confident that studying with UCEM is the best choice for you.

### Academic support tutors

This team will help you navigate the world of online learning. Whether you need help using the VLE, the e-Library, understanding how to submit assignments, or managing your workload, these tutors are here to help you in a variety of ways throughout your studies.

### Academic support

Our academic staff are experts in their fields and are here to make your studies with UCEM both stimulating and inspiring, whilst offering vital support and guidance along the way.

### Student engagement team

Your first point of contact as a student. They will support you your studies and with queries, ensuring you're put in touch with all of the right teams and services within UCEM.



### Module tutors

Your module leader is assisted by a team of module tutors who provide additional support via the weekly discussion forums and through webinars.



### Disability and wellbeing

UCEM has a dedicated disability and wellbeing team who work to provide all students with the support and tools they need to succeed. Support is available to students with a range of disabilities, health conditions and learning difficulties.



 [disabilitysupport@ucem.ac.uk](mailto:disabilitysupport@ucem.ac.uk)

 **0800 019 9697**



## Programme information



### MSc entry requirements

Entrants onto our MSc programmes are normally required to have attained one of the following:

- A Bachelor's degree with honours at lower second standard (2:2), or equivalent **or**:
- A Bachelor's degree, or equivalent, plus experience in a relevant field **or**:
- A Level 5 qualification as defined by the Framework for Higher Education Qualifications for England, Wales and Northern Ireland (FHEQ), plus five years' relevant experience

All UCEM programmes are taught and assessed in English, therefore, entrants need to demonstrate adequate proficiency in the language before being admitted. Examples include:

- GCSE - Grade 4 (or C) or above in English Language or English Literature, or an equivalent qualification
- IELTS - Grade 6.0 or above, with at least 6.0 in the reading and writing modules, in the International English Language Testing System (IELTS) test

administered by the British Council in the academic test

For further information, please visit our [programme page](#).

### Assessment

Your module performance will be evaluated through a variety of assessments. Combinations of module assessment vary across programmes and from module to module. In line with the supported online education offering at UCEM, online resources will be made available in preparation of, and in conjunction with, assessments. Assessment no longer features exams, which means no travel to exam centres.

### Access and participation plan

UCEM is committed to widening access and participation by providing education that is accessible to all, to enable students to achieve and develop in their careers. For more information, please visit our [policies page](#).

## Fees and funding



### Flexible payment options

As with our online mode of learning, your payment options with us are flexible. You can choose to make a one-off payment at the beginning of each semester or pay for each semester in five, monthly instalments to spread the cost. If your employer is sponsoring you, we can invoice them directly for all or part of the cost, and you will need to complete our sponsorship form. Please visit our [payment options page](#).

### Additional fees

If you do not pass a module at the first attempt, you will normally be offered a resubmission free of charge. If you fail the resubmission, you will normally be required to pay the full module fee when you retake the module. If you interrupt your studies on a module, you will be able to return to study that module at the next available opportunity for 50% of the module fee.

### Centenary fund

To celebrate our centenary year in 2019, We launched the UCEM Centenary Fund. The UCEM Centenary Fund is designed to enable students who may not otherwise have access to a career in the built environment, or who may not be able to progress their career in the built environment, to embark on a programme of academic study with us.

### Postgraduate scholarships

Our Postgraduate Scholarship Scheme is designed to assist those new students who are able to merit financial support and demonstrate a strong academic record in their previous studies. It is open to new postgraduate students from all countries and will provide a discount of up to 50% off fees for the duration of the programme. To apply for a postgraduate scholarship from UCEM, you must first be offered a place on a degree.

Please visit our [financial support page](#) for more information.

# Always a part of UCEM

Graduation is just the beginning of your journey with UCEM. Upon graduating, you'll be an UCEM alumnus/alumna, which means gaining access to fantastic benefits.



**15% discount** on all online CPD with UCEM Online Academy



**15% discount** on courses designed to provide a route to chartered membership of CIOB



Invitations to all Alumni Association CPD and networking events



Careers advice for three years following your graduation



Access to our mentoring programme

With over **150,000**

UCEM alumni and counting, you'll join a vast and growing community

# Sustainability



## Our sustainability commitment

"UCEM fully accepts its responsibilities to the natural environment and the global society. We are committed to driving forward the sustainability agenda and will play a positive and transformative role that will contribute to securing an economically, politically, environmentally and socially sustainable future."

Sustainability is as much about our future as what we do today. The built environment encourages sustainable thinking and UCEM is leading the way in educating the sector's future leaders.

## Teaching sustainability

Realising UCEM's sustainability potential goes beyond addressing day-to-day operations, to recognising our position to influence and educate industry professionals who design, develop and manage the built environment. Delivering academic excellence is one of UCEM's primary goals.

## Recognition

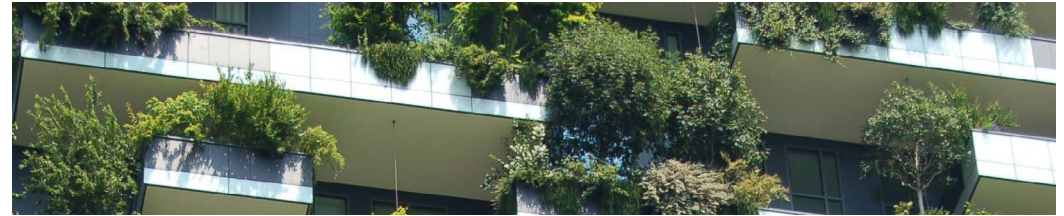
UCEM is proud to have been the first alternative provider to be awarded the Responsible Futures accreditation by the NUS (National Union of Students). This highlights UCEM's commitment to promoting sustainability and social responsibility. UCEM was also recognised with a 'Highly Commended' accolade at the **Green Gown Awards**.

## UN sustainability goals

The United Nations' Sustainable Development Goals (SDGs) outline 17 interconnected objectives in order to achieve a better and more sustainable future for all. These goals address the challenges we face as a planet, including poverty, inequality, climate change, environmental degradation, peace and justice.

The UN sets out to achieve these wide-reaching goals by 2030, and UCEM is working institutionally to achieve these goals where possible, as well as striving to incorporate them into our curriculum. We are currently in the process of mapping our curriculum to these goals, so check our website in the future for more information.

# The UN's sustainability goals



**SUSTAINABLE DEVELOPMENT GOALS**

Patron: HRH The Prince of Wales

## Our programmes at a glance

Our degree programmes allow our students to meet the academic requirements to progress to professional membership and gain chartered status. Please see our website for specific accreditation details for each degree.

### Our undergraduate programmes:

- BSc Access Module
- Undergraduate Single Module Study
- Certificate of Higher Education Built Environment Studies
- BSc (Hons) Building Control
- BSc (Hons) Building Surveying
- BSc (Hons) Construction Management
- BSc (Hons) Quantity Surveying
- BSc (Hons) Real Estate Management

### Our postgraduate programmes:

- Postgraduate Access Programme
- Postgraduate Single Module Study Programme
- MSc Building Surveying
- MSc Construction Management
- MSc Quantity Surveying
- MSc Real Estate

### Our specialist programmes:

- MBA Construction and Real Estate

University College of Estate Management  
Horizons, 60 Queen's Road, Reading, RG1 4BS

Freephone UK: 0800 019 9697  
International: +44 (0)118 921 4696  
enquiries@ucem.ac.uk  
www.ucem.ac.uk



#ItsTime