

Changes to UCEM Regulations for 2020/21

UCEM Regulations are important because they set out the rules that apply to your studies and assessment with UCEM.

We review and update the regulations annually.

One document

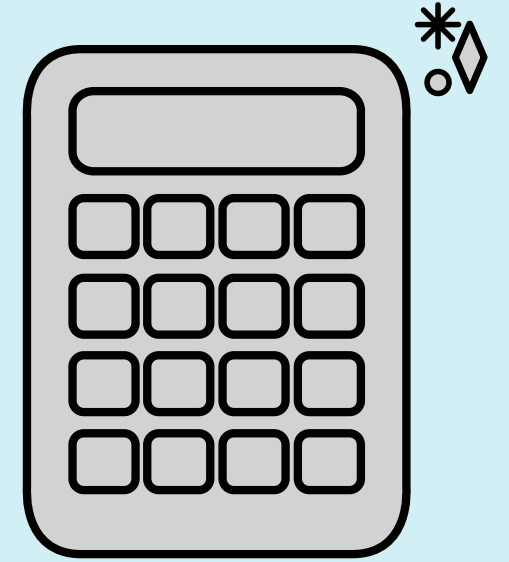
You can now find all the regulations that apply to you in the "Academic and Programme Regulations".

Previously there were two different documents (Academic & General and Assessment, Progression & Award) but these have now been merged into one.



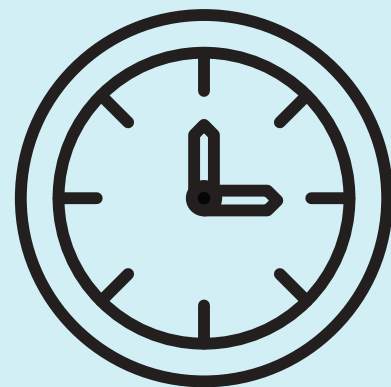
Rounding rules

The regulations now explain how we round your overall module mark and the average mark used to calculate your classification.



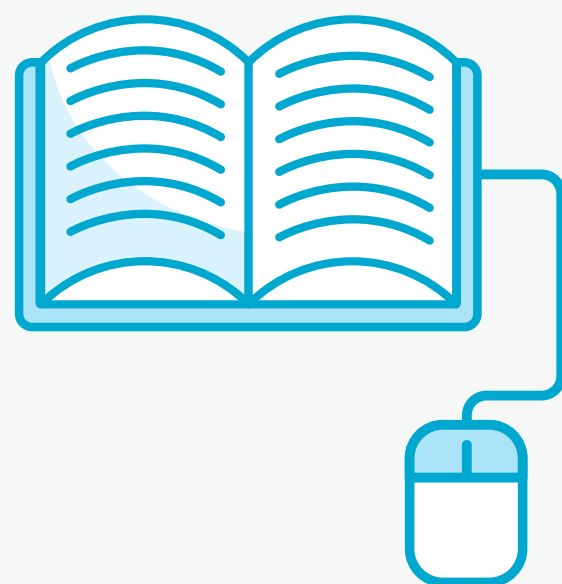
Changes to extensions and late penalties

See subsequent page or section 5.6 of the regulations for more information.



Changes to number of attempts, resubmissions and retakes

See next page or sections 6.3–6.5 of the regulations for more information.



Changes UCEM can make to programmes & termination of studies

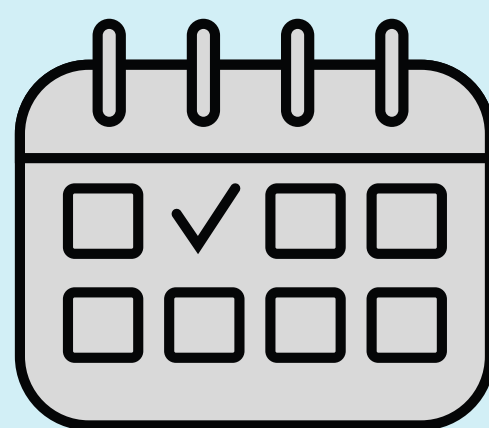
Information on these topics that was previously in the regulations has now been moved into the Terms and Conditions of Contract.



www.ucem.ac.uk/terms-and-conditions

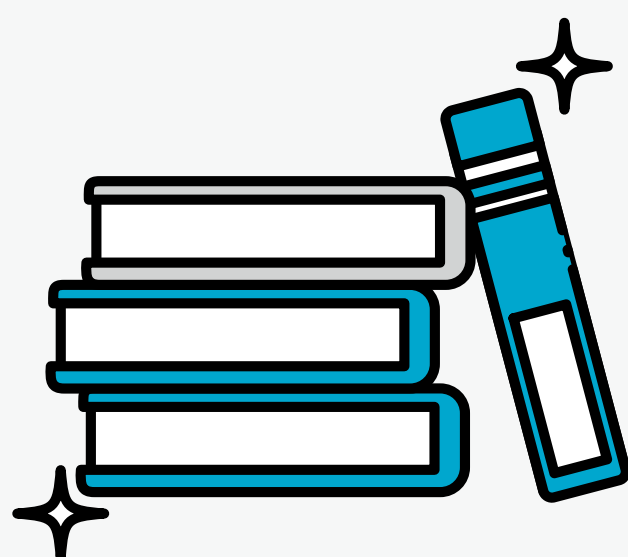
Re-registration

There is now more detailed information in section 2.4 and 3 on the rules of re-registration, when you can choose not to re-register, changing your modules, and changing your programme.



Maximum number of modules per semester

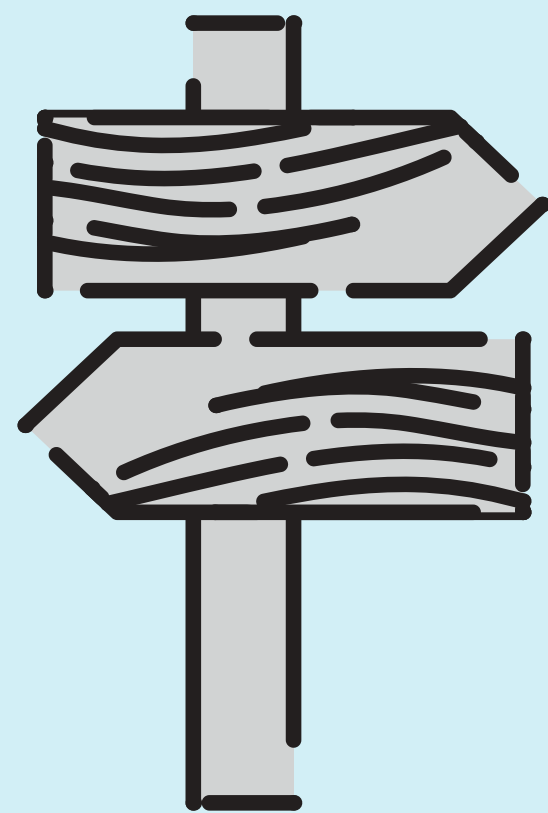
See section 2.2.9 onwards for information about how many modules you can study per semester.



Transition Regulations

Transition regulation appendices apply to students who started studying with UCEM before autumn 2020.

They outline some additional regulations to help your progression onto the new Transform version of our programmes and some exceptions to the main regulations to ensure you are not disadvantaged by the changes in the main regulations.



Fitness to Study

There is a new Fitness to Study Procedure that outlines how we will help if there are concerns about your fitness to study.



Passing your modules from 2020/21

Number of attempts



You are allowed **4 attempts** at a module: a first sit, a resubmission, a retake and another resubmission.

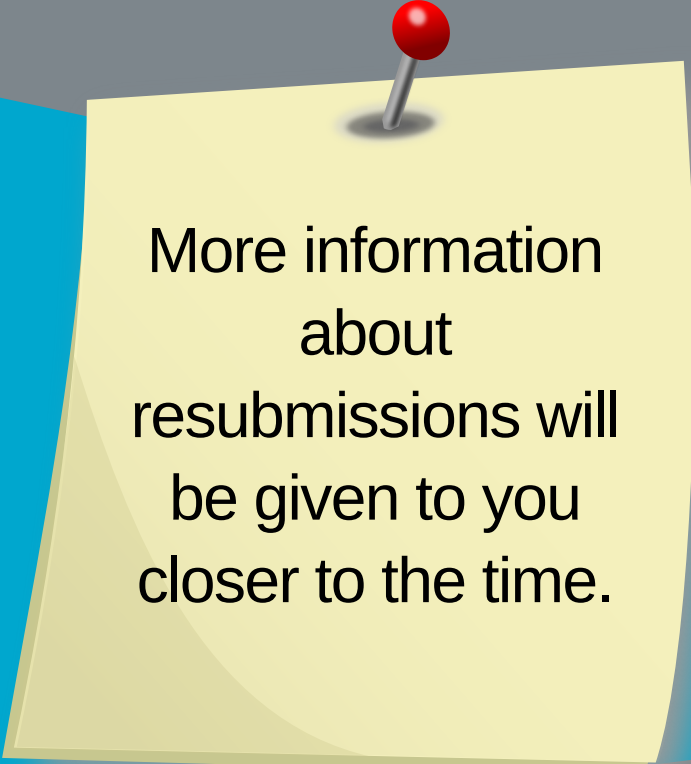
For students who started before September 2020: you will get the full 4 attempts to complete **all your modules** from autumn 2020, even if you attempted the equivalent module previously.

Resubmissions

A resubmission means **resubmitting the assessments you have failed by a set deadline**, as a second attempt after having previously failed the module, or after a retake. This allows you another attempt almost immediately, without having to wait until the next delivery of the module!

Any pass standard assessment marks already achieved will be **carried forward** into your resubmission attempt.

Your mark will be **capped** at the module pass mark.



More information about resubmissions will be given to you closer to the time.

Retakes

A retake is where you must **join the next delivery** of the module.

You must **begin the module again** and note any changes from the last semester.

No marks can be carried forward to a retake and your mark will be capped. You will be charged the **full module fee** again to retake the module.

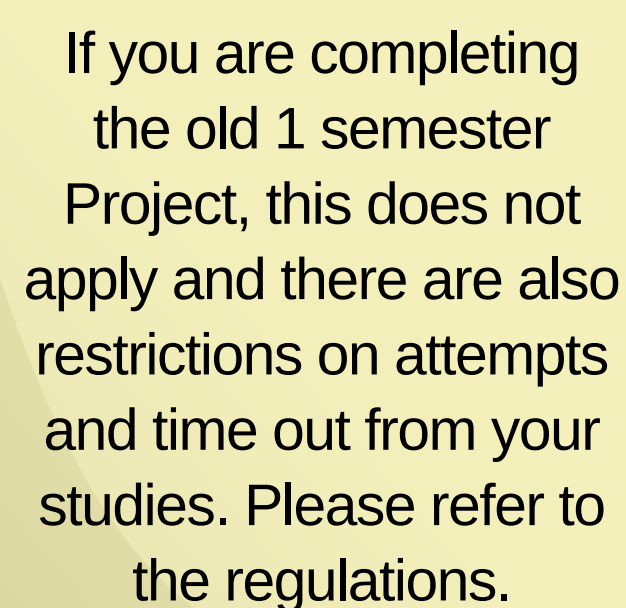


40-credit Project Module Retake

To retake your 40-credit Project Module you will join the specific **shortened "Project Retake" module**.

This module will **begin after the release of your resubmission results** i.e. mid-way through the semester after you finished your first attempt.

You **can carry forward** your first assessment mark if it is pass standard.



If you are completing the old 1 semester Project, this does not apply and there are also restrictions on attempts and time out from your studies. Please refer to the regulations.

Academic compensation

Academic compensation is where **your overall performance** at an academic level **can make up for a failed module** at the same academic level. More detail can be found in section 6 of the regulations, or appendices C and D for students who started before September 2020.

Academic compensation will only be considered **after resubmissions**.



Extensions and late penalties in 2020/21



Extensions

You are still allowed one 7-day extension per semester (for Spring 2021 this has been changed to one 7-day extension per module you study) but now you can use it on any assessment, including final assessments (but excluding CMAs, portfolios and resubmissions).

The temporary COVID measure allowing 7-day extensions on all assessments will not continue in 2020/21. You should use the Mitigating Circumstances Procedure if you encounter issues completing your assessment due to COVID.

Students with Additional Support Plans will still receive extensions as set out in their plan.

Late penalties

1. Assessments submitted up to **24 hours late** will receive a new lower **5 mark penalty**.
2. Assessments submitted between **1 - 7 days late** will receive the usual **10 mark penalty**.
3. Assessments submitted between **8 - 21 days late** will now receive a mark, but it will be **capped at the pass mark**.



Exceptions!

1. No assessments will be accepted more than 21 days after the original submission deadline.

e.g. this means that with a 7-day extension, the latest you are allowed to submit is 14 days after your extended deadline.

2. Late submissions will NOT be accepted for CMAs or resubmissions. If you do not submit these by the deadlines, you will receive a mark of zero.



See section 5.3 of the Academic and Programme Regulations for the full rules and detailed examples of extensions and late penalties