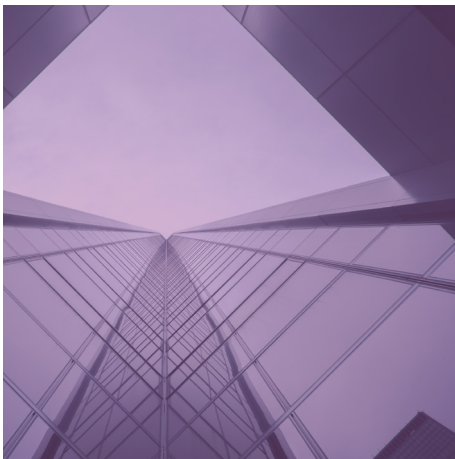


The logo for UCEM 100, featuring the letters 'UCEM' in a bold, sans-serif font. The 'U' and 'C' are yellow, while 'E' and 'M' are grey. To the right of 'EM' is a vertical stack of three zeros '000' in a grey, sans-serif font.

UNIVERSITY COLLEGE
OF ESTATE MANAGEMENT
EST 1919



MSc Quantity Surveying

Spring Intake

2019/20

SUPPORTED
ONLINE LEARNING
WITH UCEM.AC.UK



RICS



CIOB



cabe




chartered
ices



HKICM
Hong Kong Institute of
Construction Managers
香港營造師學會

Realising your potential in the Built Environment

Patron: HRH The Prince of Wales



UCEM is the leading provider of supported online learning for the Built Environment

Thank you for considering studying with UCEM. We are dedicated to ensuring your success and providing the best possible learning experience for all our students.

Since 1919, when we were founded as the College of Estate Management, we have supported around 150,000 students worldwide.



With 100 years' experience of providing specialist and innovative training globally, we are here to support you through your studies and ensure you join the path to a rewarding career.

We are steadfast in our aspiration to be the leading, vocational, online university and I look forward to welcoming you to our global community.

Ashley Wheaton,
UCEM Principal



Our Patron,
His Royal Highness, The Prince of Wales

Why choose UCEM?

- UCEM is the leading provider of supported online education for the Built Environment
- UCEM programmes are recognised and accredited by professional bodies including the Royal Institution of Chartered Surveyors (RICS), Chartered Institute of Building (CIOB), Chartered Association of Building Engineers (CABE), Chartered Institution of Civil Engineering Surveyors (ICES) and Hong Kong Institute of Construction Managers (HKICM). This allows students to progress to professional membership and gain Chartered status
- UCEM programmes offer a range of modules that allow you to choose a specialism to support your career path
- You will be supported every step of the way by our Tutors, who are experienced practitioners in their respective fields
- Designed for busy working professionals, supported online education offers the flexibility to fit your studies around your work. If your circumstances change, we can help you find a way to complete your studies, whether this means slowing down or picking up the pace
- Our supported online education model offers you access to our materials wherever you are in the world. If your work requires you to change location or travel, you can take us with you!
- All your learning materials are included online
- Our Matrix accredited professional support staff are also there to support you with any other difficulties you may experience during your studies

Our programmes at a glance

Our degree programmes allows our students to progress to professional membership and gain Chartered status. Please see the following programme specific page or our website for specific accreditation details for each degree.

Our undergraduate programmes:

- BSc (Hons) Building Control
- BSc (Hons) Building Surveying
- BSc (Hons) Construction Management
- BSc (Hons) Quantity Surveying
- BSc (Hons) Real Estate Management

Conversion postgraduate programmes:

- MSc Building Surveying
- MSc Construction Management
- MSc Quantity Surveying
- MSc Real Estate

Specialist programmes:

- MBA Construction and Real Estate

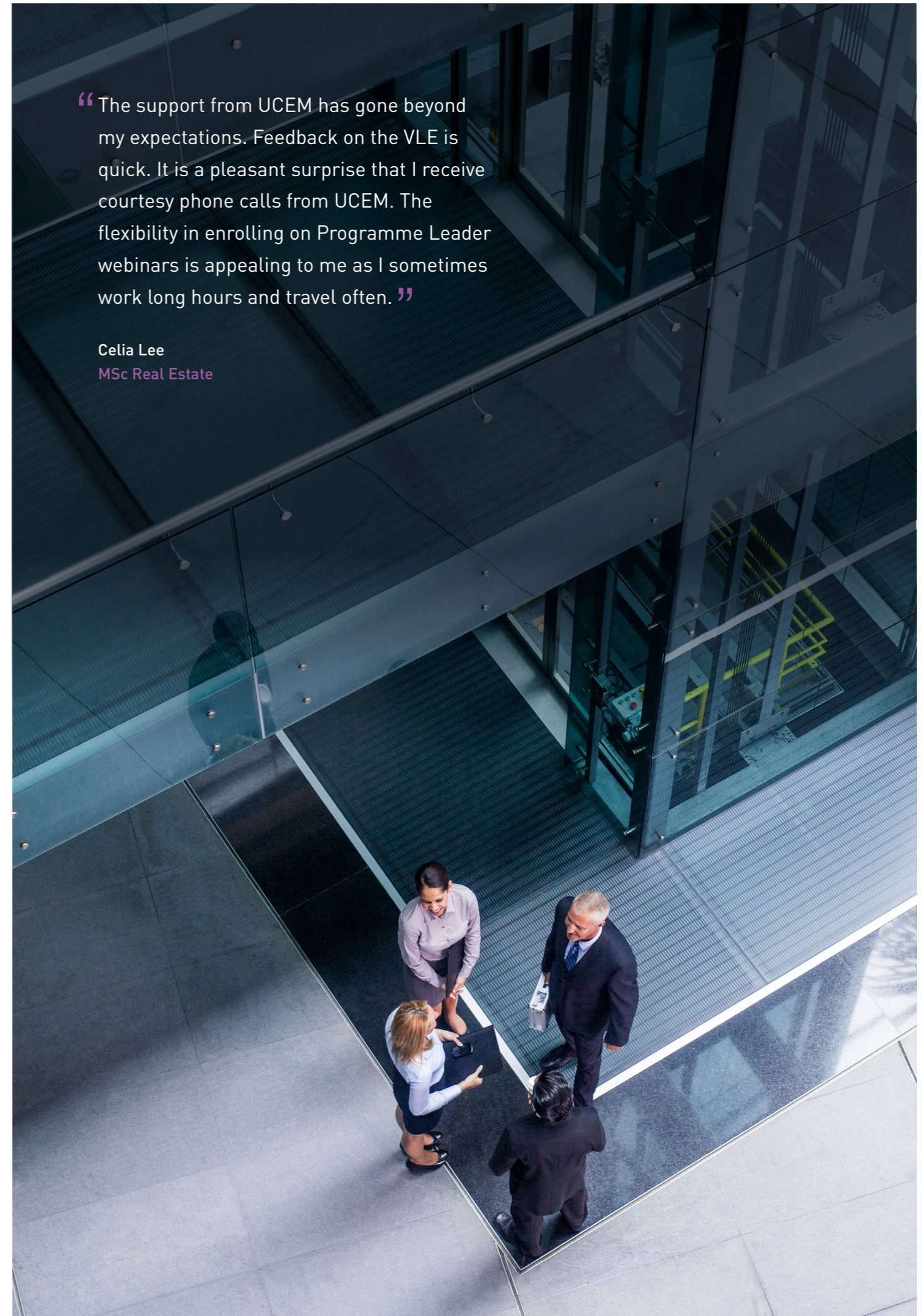
Our programmes enable you to:

- Develop specialist skills
- Gain in-depth industry knowledge
- Obtain insights into the Built Environment sector
- Gain a RICS/CIOB/CMI/HKICM/ICES/CABE accredited degree*
- Start your path to APC and professional status
- Further expand your network with fellow students

*See programme page for details

“The support from UCEM has gone beyond my expectations. Feedback on the VLE is quick. It is a pleasant surprise that I receive courtesy phone calls from UCEM. The flexibility in enrolling on Programme Leader webinars is appealing to me as I sometimes work long hours and travel often.”

Celia Lee
MSc Real Estate



MSc Quantity Surveying

The MSc Quantity Surveying programme is a postgraduate conversion programme which is designed to align your skills to the educational requirements of the industry's professional bodies.

The programme gives you an informed view of the key areas of knowledge required to develop your quantity surveying (QS) skills including quantification and measurement of construction works, cost management, contract practice and procedures, procurement and building economics. There is also a research project which will provide an in-depth assessment of a topic of your choice.



Malcolm Kirkpatrick
MRICS ICIQB PCTHE FHEA

Course enquiries:
enquiries@ucem.ac.uk

AWARD:
MSc Quantity Surveying

DURATION:
2 years

DATES:
Apply by 13 January 2020 to start on 24 February 2020

FEES:
£1,125 per module for students commencing in the 2019/20 academic year x 8 modules
Total programme fee: £9,000

A word from the Programme Leader

"My aim is to help professionals, whose first degree or career path was not necessarily in the construction industry or did not enable them to progress to full membership at that time, to fulfil their dreams to become full members of the RICS and CIOB professional institutions. Our MSc Quantity Surveying programme is a conversion programme that is fully accredited by these institutions and provides the academic requirements for full membership.

This continues to be a successful programme that offers a leading, online experience from a provider specialising in accessible, relevant and cost-effective education."

TIME COMMITMENT:
15-20 hours a week for 42 weeks per annum
Each 20-credit module equates to a total of 200 study hours broken down between directed online learning, self-directed learning and assessment. The breakdown between these three types of activity may vary between modules but on average is as follows:
Directed online learning (50%)
Self-directed reading (17%)
Assessment (33%)

This programme is also registered with the Hong Kong Non-local Courses Registry (NCR registration number 252542). It is a matter of discretion for individual employers to recognise any qualification to which these programmes may lead.

Yr	Spring	Autumn
1	Sustainable and Innovative Construction (20 credits) Building Economics (20 credits)	Law for Surveyors (20 credits) Contract Administration and Practice (20 credits)
2	Procurement and Tendering (20 credits) Management of Construction (20 credits)	Professional Cost Management (20 credits)
Postgraduate Project (40 Credits)		
■ Core Modules		

Please note that from autumn 2020, UCEM will be making changes to its programme delivery as part of an ongoing commitment to provide an excellent student experience. If you enrol prior to autumn 2020, you will experience these changes. You can find more information about the Transform Project and how these changes will affect you on our website at www.ucem.ac.uk/transform-project

You should also be aware that as part of UCEM's rigorous quality assurance activities, the institution is required to revalidate its programmes regularly. Due to the work on this, there may be some changes to the programme information advertised. Any changes will not affect programme accreditation or final awards.

Programme accredited by:



"Early in 2004, I was working in my family contracting business and I was looking to study for some formal qualifications. I'd left school with very little in the way of qualifications and my marks were not good at all. Therefore, I began to research 'distance learning' and CEM [now, UCEM] seemed the natural choice."

Paul Whittle
MSc Quantity Surveying

How we teach

Supported online education

Students study in an online environment with structured weekly learning materials further supported and enhanced through interactions with Tutors and other students. Students are further assisted by the excellent student support services which we provide.

Why supported online education?

- We provide you with the resources and tools you need to build your knowledge and skills. These are made available online via our Virtual Learning Environment (VLE), which hosts a comprehensive e-Library and study support materials
- Rich online learning resources – delivered across a range of learning media, we guide your weekly study to achieve learning outcomes
- Fully supported - from student queries, e-Library resource support to careers advice, we are here to help you
- Accessible learning - access to your learning materials to study wherever you are with an internet connection (some materials are downloadable for study offline)
- Flexible - choose your speed of study and change it if needed
- Earn while you learn - designed to fit around your work and personal commitments



Virtual Learning Environment

Your learning platform

We teach all our programmes online so you can learn when you want to and wherever you are, around your work and other commitments.

Accessible

The VLE is the gateway to your learning journey and our global learning community. Turn on your computer, connect to the internet and it's there. Take it with you when you need to – you can access the VLE on your mobile device, tablet or laptop on your coffee break, on the train wherever you are.

The VLE contains your structured weekly learning for each module. Learning materials are provided through a variety of media ranging from e-textbooks, videos and infographics through to interactive e-learning resources which can support your study both online and offline. Join the conversation and hear a variety of perspectives and opinions – an essential part of gaining the widest range of insights you can take with you into the world of work.

Our online guidance from highly experienced Tutors will help you to make the most of your learning experience, and our dedicated professional services team will provide regular support and information.

e-Library

Through the VLE, you can access our e-Library which gives you access to e-books, journals, articles and other online resources that you will need throughout your study with us.

Getting started

Four weeks before you start a programme, and only once you have registered, you will be given access to the Induction Module which will allow you to get used to studying using the VLE. This module is compulsory for all students so it's worth starting as soon as you are given access.

What's happening on the VLE?

- An Induction Module to prepare you for online learning
- Online assignment submission, feedback and results
- Access to online careers support and guidance, UCEM Job Shop and a Careers and Employability Advisor
- Discussion forums shared by fellow students, Tutors and UCEM staff
- Information on how to access UCEM student support services
- Access to libraries of periodicals to support you in writing your assignments, projects and dissertations
- Comprehensive study skills section providing support on developing academic writing

General programme information

MSc entry requirements

Entrants onto our MSc programmes are normally required to have attained one of the following:

- A Bachelor's degree with honours at lower second standard (2:2), or equivalent
- A Bachelor Degree, or equivalent, plus experience in a relevant field
- A Level 5 qualification as defined by the Framework for Higher Education Qualifications for England, Wales and Northern Ireland (FHEQ), plus five years' relevant experience;
- A professional qualification plus five years' relevant experience.

All UCEM programmes are taught and assessed in English. You will therefore be required to demonstrate adequate proficiency in the language before being admitted to a course. Specific English language requirements can be found on our website under entry requirements for each programme.

You will be required to provide copies of your qualification certificates and proof of ID that have been verified to be true copies of the original by someone in a professional occupation.

Assessment

Modules are assessed through a variety of assessments such as coursework and examinations. Combinations of module assessment vary across programmes and from module to module. In line with the supported online education offering at UCEM, online resources will be made available in preparation of, and in conjunction with, assessments.

Award details

When you successfully complete all elements of the programme, you will be awarded a degree and will be entitled to use the designatory letters BSc (Hons), MSc or MBA.

Staff Qualifications and experience

All our programmes are taught by a team of full time academic staff and associate Tutors. UCEM academic staff and associates have extensive, relevant industry experience in addition to their academic qualifications. Please see www.ucem.ac.uk/academicstaff for further information about the qualifications and experience of UCEM's academic staff.

Fees and funding

Programme fees

Your programme fees are fixed for the duration of your studies. This means that the fee you pay per module will not increase from one year to the next, as long as you remain registered on the same programme. Different fees may be applicable if you decided to transfer to a different programme.

Payment options

You can pay your fees for the semester as a one-off payment by credit/debit card, bank/building society cheque, banker's draft, or direct bank transfer. If you wish to pay for the semester in five instalments, you can do so online using a credit/debit card. The initial instalment will be taken on the day of registration. The remaining monthly instalments will begin on the 1st of the month after the start date of your programme.

Student finance

Part-time students from England and Wales can apply to Student Finance England/Wales for a tuition fee loan (undergraduate programmes) or a Postgraduate Loan (postgraduate programmes). Other loans are also available. View our website for further information.

Retake fees

You may be required to pay a retake fee if you are unable to pass a module at the first attempt, and are then offered a further attempt. If you defer or suspend your studies, or are deemed to have not sat the module assessment by the Board of Examiners, you will not be required to pay a retake fee, provided you re-join the module at the first available opportunity. Please refer to the website for retake fee details.

Additional costs

UCEM provides examination centres all over the world in addition to the UK. You should expect to incur travel costs to attend your nearest examination centre, for those modules which contain examinations.

Programme materials

The fees include the provision of online material for your modules, access to the VLE, academic support, the e-Library Service and student services, including the Student Advice Team and the Careers Service. All module material is provided online. Where the textbook is a 'core text', the book will be available as an 'e-book' for you to download on to your electronic device.

For further details, please go to:
www.ucem.ac.uk/fees-and-funding



Realising your potential in the Built Environment

Accessible, flexible and cost-effective
education producing leading talent for
a better Built Environment

University College of Estate Management

Horizons, 60 Queen's Road, Reading, RG1 4BS

Freephone UK: 0800 019 9697

International: +44 (0)118 921 4696

enquiries@ucem.ac.uk

www.ucem.ac.uk

This programme outline was issued in September 2019 and the information was correct at the time of going to press. While University College of Estate Management makes every effort to ensure the contents and statements made in this publication are fair and accurate, there may be changes following publication which affect the contents. Applicants prior to making an application must therefore review the up to-date information that is available on the website.

Programmes accredited by:

